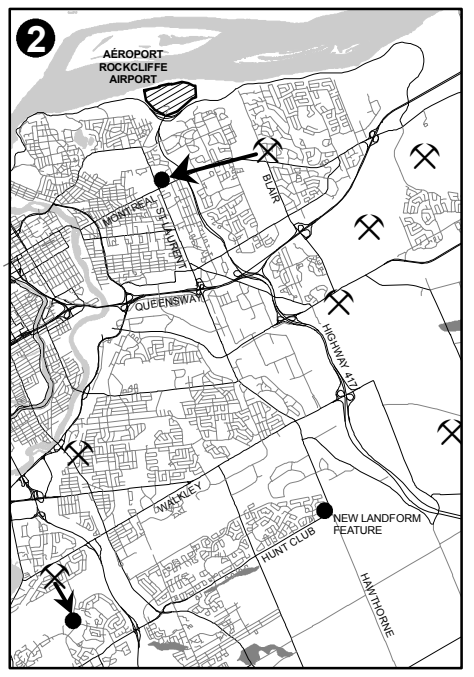
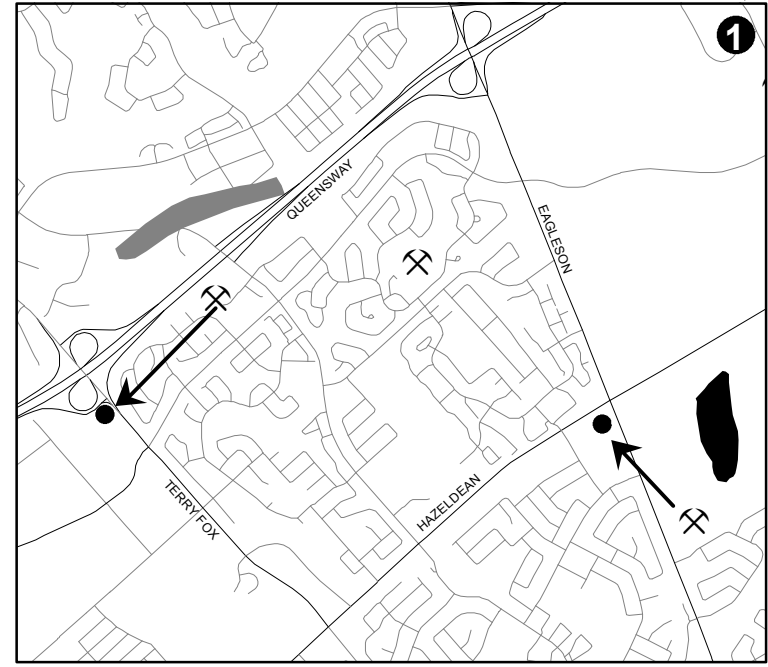
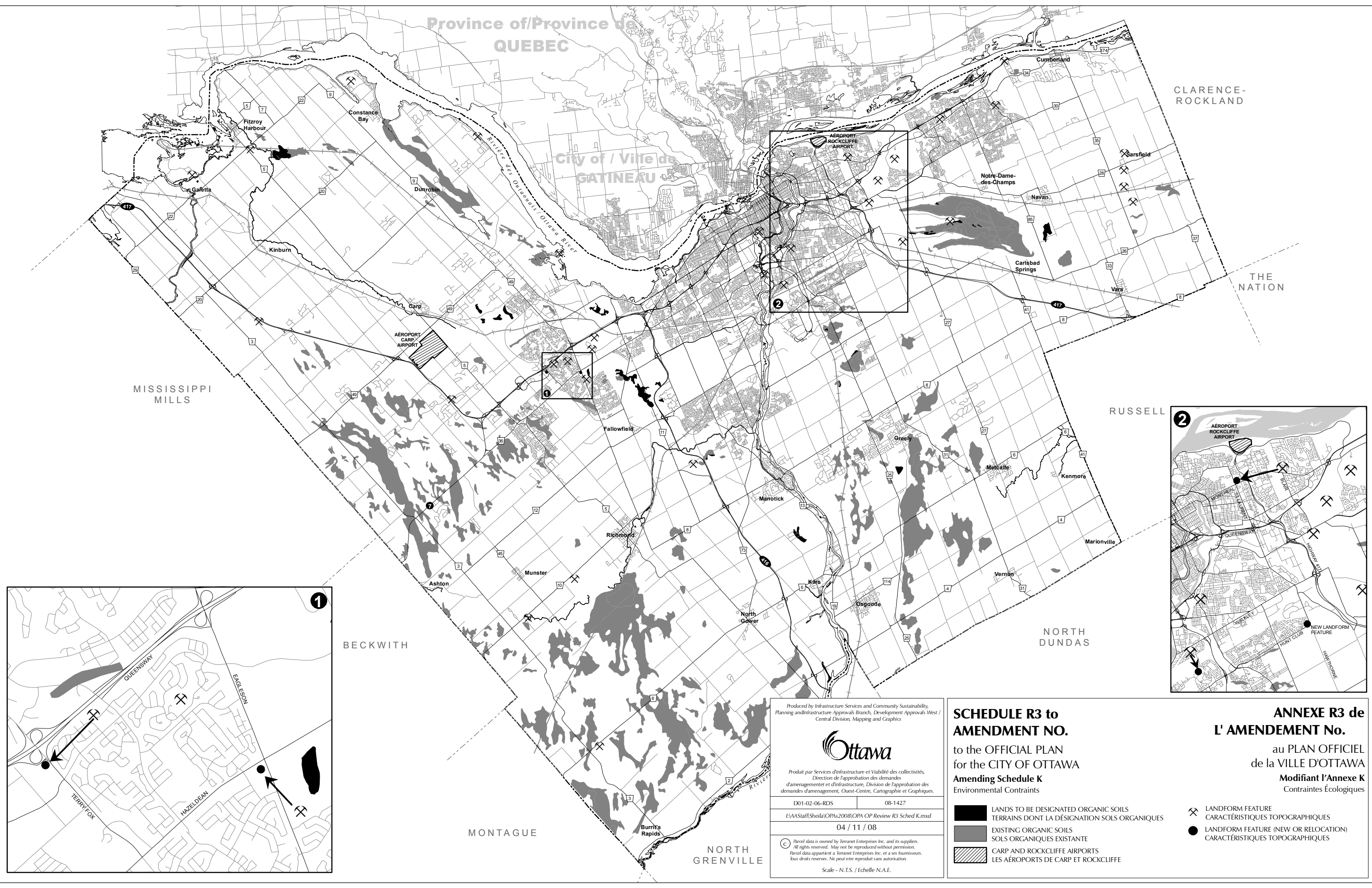


Province of/Province de
QUEBEC

City of / Ville de
GATINEAU



Produced by Infrastructure Services and Community Sustainability,
Planning and Infrastructure Approvals Branch, Development Approvals West /
Central Division, Mapping and Graphics

Ottawa

Produit par Services d'infrastructure et Viabilité des collectivités,
Direction de l'approbation des demandes
d'aménagement et d'infrastructure, Division de l'approbation des
demandes d'aménagement, Ouest-Centre, Cartographie et Graphiques.

D01-02-06-RDS 08-1427

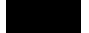


I:\AAStaff\Sheila\OPAs\2008\OPA OP Review R3 Sched K.mxd

04 / 11 / 08

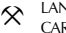

Parcel data is owned by Terranet Enterprises Inc. and its suppliers.
All rights reserved. May not be reproduced without permission.
Parcel data appartient à Terranet Enterprises Inc. et à ses fournisseurs.
Tous droits réservés. Ne peut être reproduit sans autorisation.

Scale - N.T.S. / Echelle N.A.E.

**SCHEDULE R3 to
AMENDMENT NO.**
to the OFFICIAL PLAN
for the CITY OF OTTAWA
Amending Schedule K
Environmental Constraints

-  LANDS TO BE DESIGNATED ORGANIC SOILS
TERRAINS DONT LA DÉSIGNATION SOLS ORGANIQUES
-  EXISTING ORGANIC SOILS
SOLS ORGANIQUES EXISTANTE
-  CARP AND ROCKCLIFFE AIRPORTS
LES AÉROPORTS DE CARP ET ROCKCLIFFE

**ANNEXE R3 de
L' AMENDEMENT No.**
au PLAN OFFICIEL
de la VILLE D'OTTAWA
Modifiant l'Annexe K
Contraintes Écologiques

-  LANDFORM FEATURE
CARACTÉRISTIQUES TOPOGRAPHIQUES
-  LANDFORM FEATURE (NEW OR RELOCATION)
CARACTÉRISTIQUES TOPOGRAPHIQUES