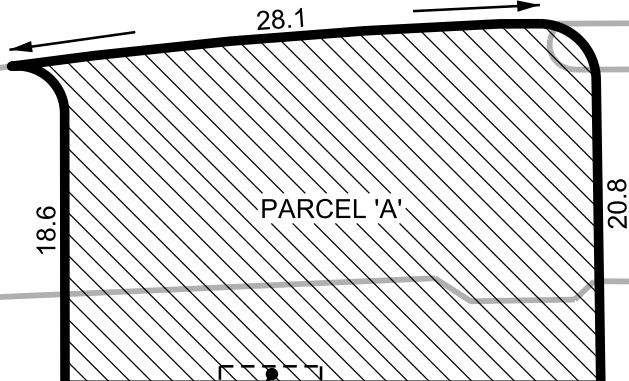


CITY OF OTTAWA
PIN 04215-0140

GEORGE STREET



*SUBJECT TO AN
AERIAL ENCROACHMENT
AGREEMENT FOR
A CANOPY OVER
PART 1 PLAN 4R-23633
AS IN INST. OC980018*

No. 90 George Street

PIN 04215-0252
PIN 15815-0001 TO 0025
PIN 04215-0254

LOT 'K'

LOT 'L'

NORTH SIDE OF RIDEAU STREET

LOT 'I'

REGISTERED PLAN 42482

CAUTION:
BOUNDARY AND TOPOGRAPHICAL
INFORMATION SHOWN ON THIS SKETCH
MAY NOT BE CURRENT AND ARE
NOT BASED ON AN ACTUAL SURVEY

90 GEORGE STREET - PROPOSED VALET PARKING

OWNER:
CITY OF OTTAWA

CAD BY L. GUIBORD

CHECKED BY B. LYNCH



**INFRASTRUCTURE SERVICES
DEPARTMENT
SURVEYS & MAPPING UNIT**

SCALE: 1:400 (METRIC)

DATE: 2009/07/13

AREA = 522 sq. m.

MS No. 13570.DGN